

Nano

All-in-one content playback, warping and edge blending solution



- **All in one| Content playback, warping and edge blending from one box**
- **Compact and powerful| Smaller footprint than an A4 sheet of paper**
- **Multi-channel| 4 video outputs for connection of display devices**
- **Simple to use| Supports USB camera for auto-blending of projectors**

Powered by VIOSO the market leaders in multi projector alignment solutions the Optoma Nano is a simple to use all-in-one content playback, warping and edge blending solution.

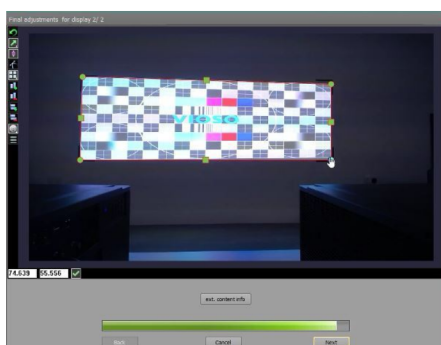
Smaller footprint than an A4 sheet of paper but featuring a highly powerful feature set including Intel i5 processor and NVIDIA QUADRO graphics the Optoma Nano is ideal for multi-projector installation where powerful edge-blending warping and content playback are required from one compact package.

The Optoma Nano supports the use of a simple USB camera for auto-blending of projectors using the famous patented VIOSO auto-alignment technology, for more advanced setups – IP network cameras that provide greater flexibility are optionally available.

Powered by VIOSO

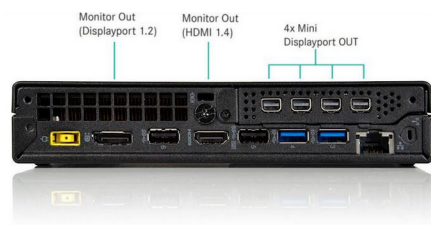
Powered by **VIOSO** the market leaders in multi projector alignment solutions the Optoma Nano is a simple to use all-in-one content playback, warping and edge blending solution.

VIOSO®



Patented projector auto-alignment & calibration

Using **VIOSO** patented auto alignment technology - you will be able to set up even the most complex projection scenarios within minutes. Support is included for flat screens, domes, curved screens and irregular surfaces. Auto alignment and calibration can be achieved using a simple USB webcam, but fisheye and widescreen networked cameras for more complex installations are also supported.

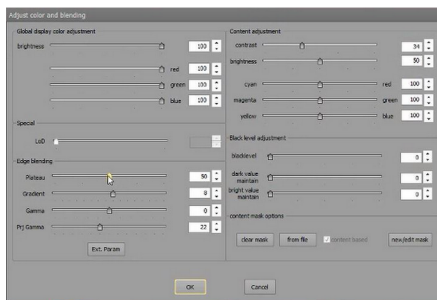


Multichannel display output

Optoma Nano features 4x Mini DisplayPort outputs and also includes 4x Mini DisplayPort to HDMI adapters for connection to HDMI equipped display devices. An HDMI and standard DisplayPort connector are included for monitoring and setup purposes.

Various camera options supported

Depending on the installation environment different camera models may be required for successful auto calibration completion. Optoma Nano supports a variety of USB webcams or industrial network cameras with different lens options. Contact us for recommendations on which camera is suitable for your project.

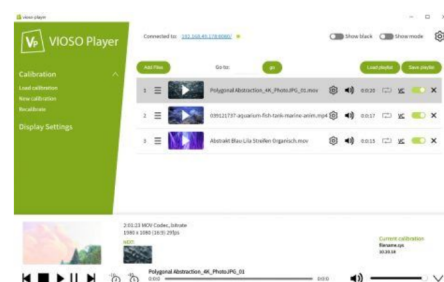


Masking and colour correction

Optoma Nano features advanced projector masking and colour correction for the perfect image.

Network control

Content on Optoma Nano can be controlled using TCP or UDP commands or Via an HTTP web interface to perfectly integrate within your project.



Specifications

The following specifications are preliminary and subject to change without notice

General

Dimensions (W x D x H) 180.3 x 182.9 x 35.6 mm

Power supply 100~240v 1.5A 50~60hz

Connections

Inputs 1 x Mic 3.5mm

Outputs 4 x Mini DisplayPort, 1 x DisplayPort, 1 x HDMI, 1 x Audio 3.5mm

Control 1 x RJ45, 1 x USB-C, 5 x USB-A

In the box

Optoma Nano, Carry case, USB mouse, Power Adapter, 4x Mini DisplayPort to HDMI adapter

Flight case dimensions 302 x 301 x 120mm

