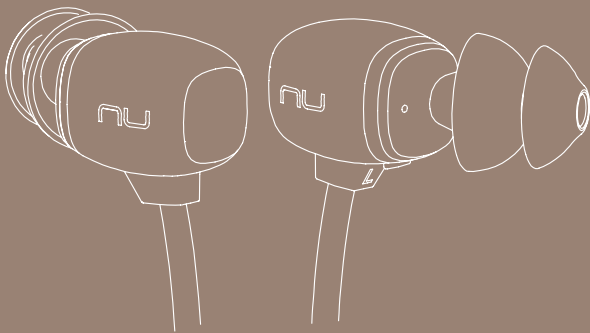


NU FORCE

# BE Sport4

*Bluetooth In Ear Headphones*



User Manual










Regulatory model name APBESPORTH

Version V1.2b

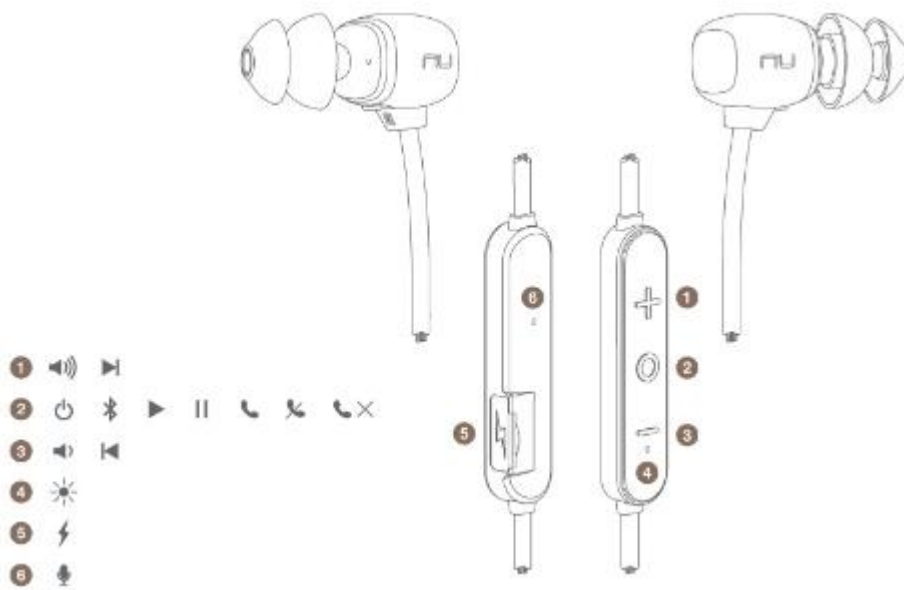
# Contents

Contents .....	2
WHAT'S IN THE BOX .....	3
BE Sport4 EARPHONES .....	4
The BASICS .....	5
Charging Your BE Sport4 .....	5
Checking Battery Level .....	5
Bluetooth Pairing .....	7
Power On/Power Off .....	8
Wearing Your BE Sport4 .....	9
Handling Phone Calls .....	10
Listening to Music .....	10
Pairing with a Laptop .....	10
Pairing with a Mac.....	11
MISCELLANEOUS .....	12
Multipoint Connections .....	12
Water Resistant.....	13
Bluetooth Connectivity .....	15
Restore Factory Settings .....	15
Voice Prompts list.....	16
Disclaimer.....	16
Federal Communication Commission Interference Statement .....	17
CE .....	18
NCC.....	19
IMDA .....	19
Specification .....	20

# WHAT'S IN THE BOX

<p>BE Sport4 earphones (with inline controller and microphone)</p>	
<p>Silicon tips (in L/M/S) Total of 3 pairs ear tips</p>	
<p>SpinFit TwinBlade tips (1 pair)</p>	
<p>Stabilizers (in L/M/S) 3 colors, total of 9 pairs</p>	
<p>Cable loop for adjusting the length of cable</p>	
<p>Pouch</p>	
<p>Charging cable (Micro-USB)</p>	
<p>Basic user's manual</p>	
<p>Safety Instruction</p>	

# BE Sport4 EARPONES



1. Volume Up Button
2. Power/Function Button
3. Volume Down Button
4. LED Indicator
5. Charging port
6. Microphone

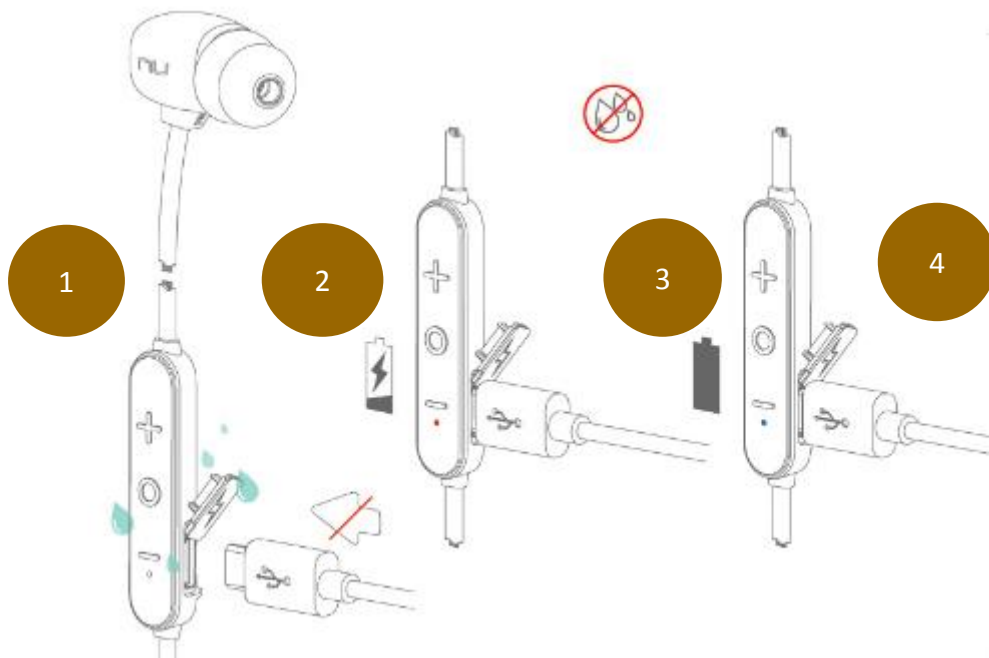
# The BASICS

## Charging Your BE Sport4

Although your BE Sport4 in-ear headphones come with a partially charged battery, it is recommended that you fully charge your BE Sport4 before first use.

1. Open the charge port cover on the in line controller.
2. The charge cable should be connected to the charge port and either to a PC or a dedicated USB charger.
3. When charging, the LED indicator is red.
4. LED Indicator turns blue once charging is complete.

*NOTE: It takes up to 1.5 hours to fully charge the BE Sport4.*



## Checking Battery Level

You can check the battery level of your BE Sport4 with the LED indicator

To check battery level:

1. Press the Power/Function, volume up, and volume down buttons simultaneously while Bluetooth connected.
2. The LED indicator will flash red and blue. The battery level will be indicated by the number of red flashes, as described in the table below:

**Number of Flashes Battery Level**

Number of red flashes	Voice prompts
2	Battery low
3	Battery at 50%
5	Full battery

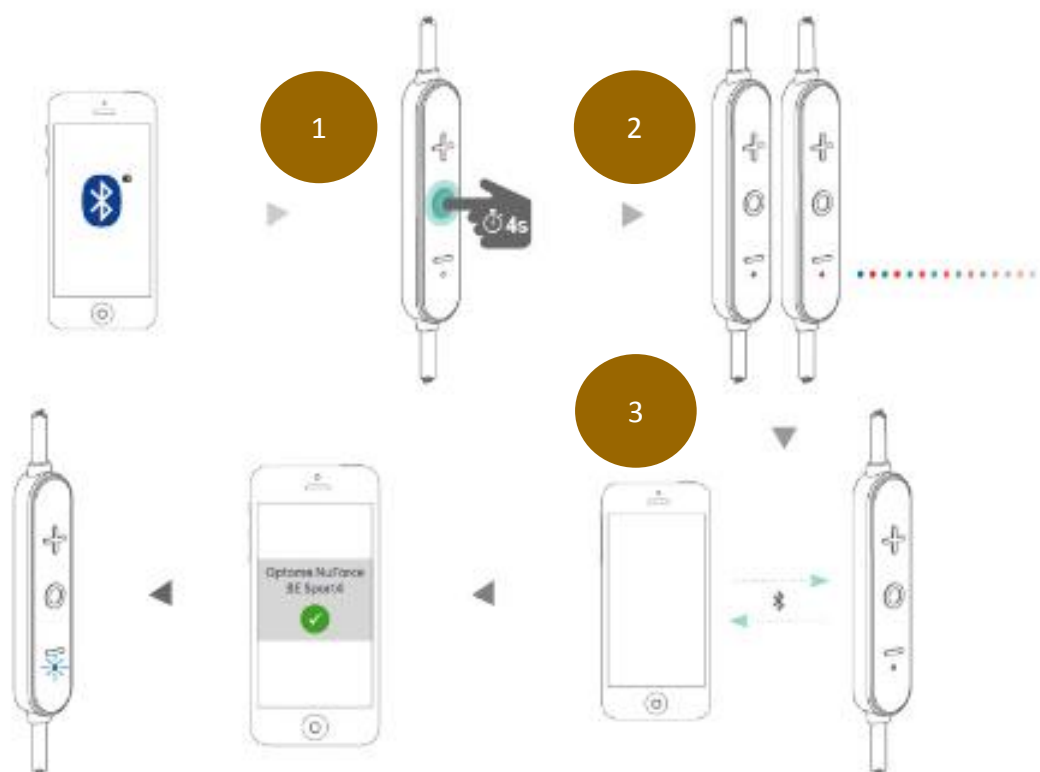
*NOTE: When the battery level is very low, you will hear a beep or a “Battery Low” voice prompt from your BE Sport4 every 2 minutes when the estimated battery reserve remaining time is under 15minutes.*

*IN ADDITION:*

1. *Users with iOS devices and some Android models will be able to view the battery status on their device’s display*

*\*On some Android and all Windows operated devices you cannot check the battery level for your BE Sport4 when you listen to music, in the middle of a phone call or in pairing mode.*

## Bluetooth Pairing



### Using your BE Sport4 for first time

#### Pairing BE Sport4 with source device

1. Press and hold the BE Sport4's Power/Function button for 4 seconds until the LED indicator light flashes blue/red. Your BE Sport4 is now in pairing mode.
2. Turn on *Bluetooth*® on your source device, then select "BE Sport4" once it appears on the device list.  
**NOTE: Consult your source device's user manual for instructions on activating Bluetooth.**
3. Once successfully paired, the LED indicator will flash blue and you hear "Primary device connected" from your BE Sport4.

#### Please note:

- A. You must always enter "Pair" mode from a powered-off state. Otherwise, pressing and holding the Power/Function button for more than 3 seconds from a powered-on state turns the BE Sport4 off.

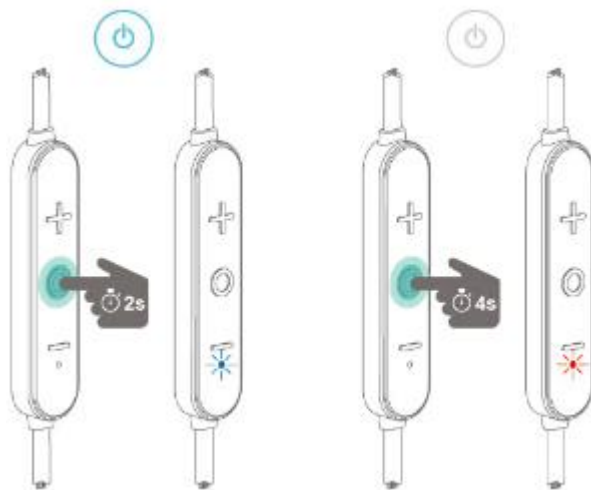
B. If left inactive in pairing mode, your BE Sport4 will automatically power off after 3 minutes.

C. Your BE Sport4 can store pairing information for up to eight devices.

To pair additional devices to your BE Sport4 ensure that your BE Sport4 is not concurrently connected to any device, then repeat the steps 1,2,3 outlined above.

In case where your BE Sport4 have already stored pairing information for eight devices and a ninth device is paired, the stored information for the very first device will be deleted.

## Power On/Power Off



To power on your BE Sport4, press Power/Function button for about 2 seconds until the LED indicator flashes blue and you hear the “Power on”.

### NOTE:

Once you have successfully paired the BE Sport4 to a Bluetooth-enabled device, the BE Sport4 will automatically connect with that device once it is powered on again. For more information check “Bluetooth Pairing” section.

If you have stored pairing information for multiple devices and more than one of those devices is Bluetooth enabled, the BE Sport4 will automatically connect with the most recently paired device.

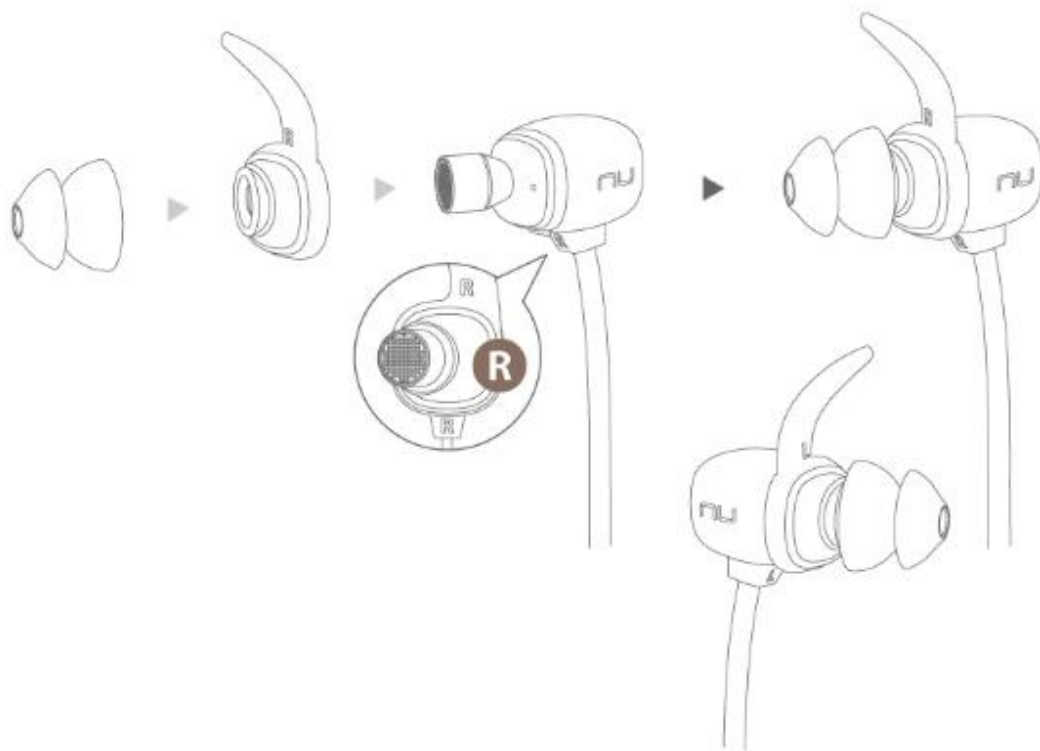
For more information read section “Multipoint Connections”.

To turn the BE Sport4 to OFF, push Power/Function button for about 4



seconds until the LED indicator turns red and you hear the “Power off”.

## Wearing Your BE Sport4



To ensure a secure and comfortable fit when wearing your BE Sport4:

1. Install the stabilizers on the BE Sport4 after removing the ear tips already placed on the boxed new set.\*
2. Select right size of ear tips and install tips on BE Sport4.
3. Rotate the stabilizers and place the BE Sport4 into each ear so that they are positioned comfortably.

**\*Please note, 2 different sizes of Ear wings are provided to offer optimal user's comfort**

Magnetic caps at the end of the earphones let users lock the earphones together and secure them around user's neck for ease of use.

## Handling Phone Calls

When your BE Sport4 are connected to a *Bluetooth*-enabled smartphone you can handle your phone calls directly using your BE Sport4 in ear headphones.

The followings describe phone call options:

Call option	Status	Action
Answer a call	Incoming call	Tap the Power/Function button
Decline a call	Incoming call	Press the Power/Function button for 2 seconds
End a call	In a call/outgoing call	Tap the Power/Function button
Redial the last number	Standby/connected	Tap the Power/Function and Up buttons simultaneously
Mute on or mute off microphone	In a call/outgoing call	Tap the Volume Up and Volume Down simultaneously
Switching handset/earphone voice	In a call	Press the Volume Up and Volume Down buttons simultaneously for 2 seconds
Adjust the volume		Tap the Volume Up or Volume Down button
Activate Siri (iOS) or Google Assistant (Android)	Standby/Connected	Double tap the Power/Function button

## Listening to Music

You can enjoy and control Audio through the in line controller on your BE Sport4.


Audio option	Action
Play or pause audio	Tap the Power/Function button
Skip to next track	Press the Volume Up button for 2 seconds
Play previous track	Press the Volume Down button for 2 seconds
Adjust the volume	Tap the volume up or volume down button

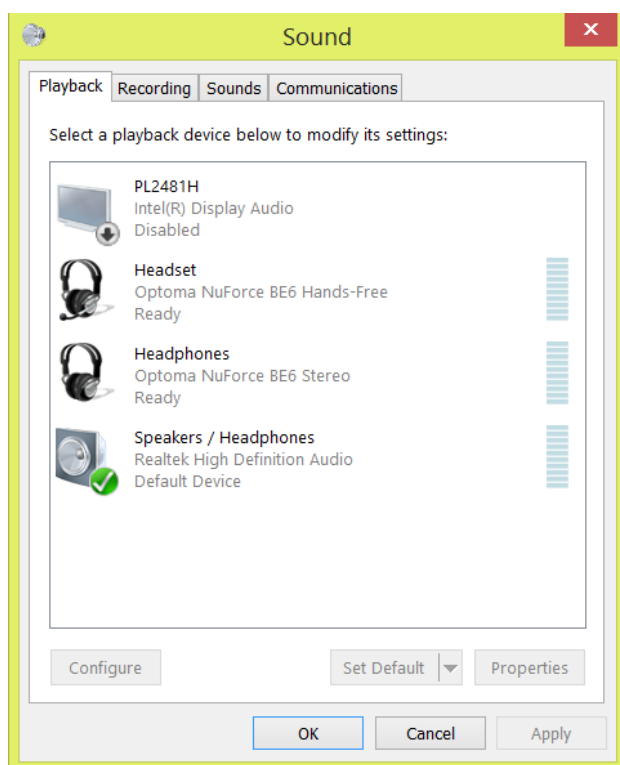
**\*Please note: when muting the BE Sport4 or reactivating it from MUTE there will be a very slight delay**

## Pairing with a Laptop

The connection instructions below apply to owners of Windows 7, 8, 8.1

and 10.

1. Power your PC/Laptop
2. Find “Bluetooth Settings”
3. Switch your laptop Bluetooth to “On”
4. Turn the BE Sport4 to “Pairing Mode”
5. When the BE Sport4 is discovered by your laptop left click on “Pair”
6. Right click on the speaker symbol at the bottom right side of the screen  

7. From the dropdown menu right click on the “Playback Device”
8. Please choose and right click the “Headphones” (see image below text)
9. Click on Bluetooth Headphones to set the “**Headphones**” as default device
10. Press OK



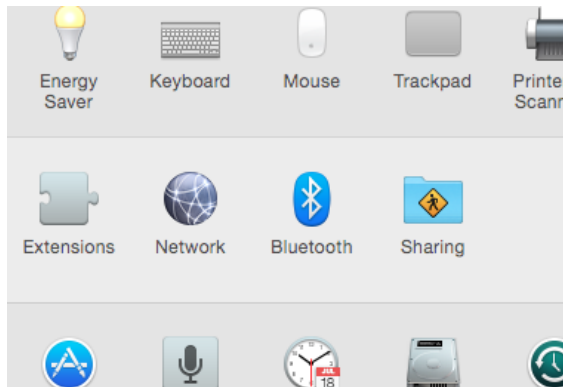
## Pairing with a Mac

The connection instructions below apply to owners of all current and recent iOS versions

1. Power your Mac
2. Open “System Preferences”

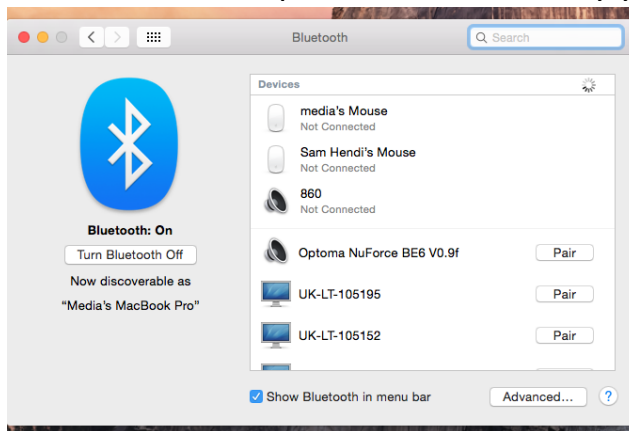


3. Click on the Bluetooth symbol



4. Turn the BE Sport4 to “Pairing Mode”

5. When the BE Sport4 is discovered by your Mac click on “Pair”



6. Your Mac is now ready to play audio via the BE Sport4

## MISCELLANEOUS

### Multipoint Connections

If you have stored pairing information for multiple devices and more than one of those devices have Bluetooth enabled at the same time, your BE Sport4 will enable multipoint connection.

Multipoint connection allows your BE Sport4 to hold connections with two devices at the same time while playing audio signal from only one of the two devices.

Multipoint connection works in the following ways:

- Your BE Sport4 automatically connects with the most recently paired device (“Primary device”).
- You must manually connect the second device (“Secondary device”) to your BE Sport4 via its operating system.
- The BE Sport4 will prioritize the audio from Primary device.
- You can control Primary device using the BE Sport4 in line controller.
- When Primary device is idle, your BE Sport4 can receive audio from Secondary device.
- Secondary device must be controlled directly from its operating system.
- Simultaneous audio from both devices is disabled.

## **Water Resistant**

NuForce headsets with the IPX5 water ingress rating are splash-resistant and water-resistant, preventing malfunctions due to moisture entering the body of the headset. However, the splash-resistant and water-resistant qualities are non-permanent and may degrade with wear and tear from daily use. Liquid damage is not covered by the warranty.

- To prevent liquid damage, please avoid the following situations:
  - ✓ Wearing the headset while swimming or showering
  - ✓ Exposing the headset to pressurized or high-speed water, such as showering, water skiing, wakeboarding, surfing or riding a water scooter, etc.
  - ✓ Using the headset in a sauna or steam room
  - ✓ Immersing the headset in water
  - ✓ Operating the headset outside the recommended temperature range, or in extremely humid conditions
  - ✓ Dropping the headset or any other actions that cause the headset to take impact
  - ✓ Disassembling the headset, including the disassembling of screws
  - ✓ Not properly covering the USB charging port, causing water or other foreign particles to enter the headset

- Types of liquids covered by the water resistance rating  
The water resistance rating only applies to fresh water and tap water. Other liquids such as the following are not within the scope of the water resistance rating: soap water, solutions mixed with detergents, solutions mixed with bath products, shampoos, hot spring water, swimming pool water, seawater, soap water, detergents, salt water, perfumes, insect repellents, lotions, sunscreens, oils, gel removers, hair dyes, and solvents.
- Micro-USB port cover is crucial to maintaining the water-resistant quality of the headset. When using the headset, make sure that the Micro-USB port cover is tightly closed. If there are foreign particles on the cover, or if the cover is not fully closed, the headset will lose its water resistance capability.
- If the headset has already come into contact with liquids, remove all connected cables and do not charge the headset until it is fully dry. Using or charging the headset or accessories while they are wet may damage your headset.
- The charging box (if any) containing the genuine wireless Bluetooth headset does not have a waterproof design. Any water-resistant qualities described in the product specifications are limited to the body of the headset.
- If the headset is not wiped after being worn during a workout, the salt from the sweat may negatively impact the lifespan of the headset. Therefore, we recommend that you use a clean cotton cloth to wipe the headset after your workout, in order to keep the headset clean.

## **Bluetooth Connectivity**

Bluetooth is a short-range wireless technology. Its connection quality may be interfered with metals, walls, and devices including but not limited to microwave ovens. At the same time, Bluetooth's 2.4 GHz frequency is also shared by some Wi-Fi connections, which may result in a slower connection. This technical problem cannot be completely eliminated despite Bluetooth's status as an international standard.

A Bluetooth headset's wireless transmission is not limited to the connection between the headset and the signal transmission device, but also between the main and auxiliary earbud. Therefore, when using a genuine wireless Bluetooth headset, we advise placing the signal transmitting device (such as your cellphone) on the same side as the main earbud in order to reduce the potential technical limitations of Bluetooth signal shielding to some extent.

The connection quality of the Bluetooth headset is influenced by factors such as the Bluetooth device connected to the headset, the communication environment, or the environment in which it is used. If the headset audio is intermittent, please run through the following scenarios to identify and avoid the following caused by environmental interference:

- There are obstacles such as people, metal objects, or walls between the headset and the Bluetooth device.
- There is a Wi-Fi device in use near the headset.
- There is a microwave oven in use near the headset.
- There is an electromagnetic radiation generating device in use near the headset.
- The distance between the headset and Bluetooth device exceeds 10 meters

## **Restore Factory Settings**

When you restore the BE Sport4 to its factory settings, the paired devices stored will be deleted.

To restore factory settings:

- 1** Ensure that your BE Sport4 are not connected to any device.
- 2** Put the BE Sport4 in pairing mode.
- 3** Press simultaneously the Power/Function, Volume Up, and Volume Down buttons for 2 seconds until the LED indicator flashes red five times and you hear five short tones from the BE Sport4.

Because all pairing information is deleted after restoring factory settings, the BE Sport4 will directly enter pairing mode once powered on.

## **Voice Prompts list**

The BE Sport4 are pre-loaded with English voice prompts

“Power On”

“Power Off”

“Full Battery”

“Battery at 50%”

“Battery Low”

“Primary device connected”

“Secondary device connected”

“Pairing Mode Activated”

## **Disclaimer**

Please be advised, the BE Sport4 is equipped with the latest technology however functionality may vary by device.



# Federal Communication Commission Interference

## Statement

1. This device complies with Part 15 of the FCC Rules. Operation is subject to the following two conditions:

(1) This device may not cause harmful interference.

(2) This device must accept any interference received, including interference that may cause undesired operation.

2. Changes or modifications not expressly approved by the party responsible for compliance could void the user's authority to operate the equipment.

NOTE: This equipment has been tested and found to comply with the limits for a Class B digital device, pursuant to Part 15 of the FCC Rules. These limits are designed to provide reasonable protection against harmful interference in a residential installation.

This equipment generates uses and can radiate radio frequency energy and, if not installed and

used in accordance with the instructions, may cause harmful interference to radio communications. However, there is no guarantee that interference will not occur in a particular installation. If this equipment does cause harmful interference to radio or television reception, which can be determined by turning the equipment off and on, the user is encouraged to try to correct the interference by one or more of the following measures:

Reorient or relocate the receiving antenna.

Increase the separation between the equipment and receiver.

Connect the equipment into an outlet on a circuit different from that to which the receiver is connected.

Consult the dealer or an experienced radio/TV technician for help.

## FCC Radiation Exposure Statement

The device has been evaluated to meet general RF exposure requirement. The device can be used in portable exposure condition without restriction.

## CE

Max RF power

BT BR+EDR ( 2402-2480MHz ) : 4.0dBm

RF exposure information: The Maximum Permissible Exposure (MPE) level has been calculated based on a distance of d=0 cm between the device and the human body.

CAUTION RISK OF EXPLOSION IF BATTERY IS REPLACED BY AN INCORRECT TYPE.  
DISPOSE OF USED BATTERIES ACCORDING TO THE INSTRUCTIONS

**Excessive sound pressure from earphones and headphones can cause hearing loss.**



Regulatory Conformance

Hereby, Optoma Corporation. declares that the radio equipment type [Bluetooth earphones APBESPORTH] is in compliance with Directive 2014/53/EU.

The full text of the EU declaration of conformity is available at the following internet address: [www.Optoma.com](http://www.Optoma.com)



Notice: This device may be used in each member state in EU

## NCC

依據低功率電波輻射性電機管理辦法

### 第十二條

※經型式認證合格之低功率射頻電機，非經許可，公司、商號或使用者均不得擅自變更頻率、加大功率或變更原設計之特性及功能。

### 第十四條

※低功率射頻電機之使用不得影響飛航安全及干擾合法通信；經發現有干擾現象時，應立即停用，並改善至無干擾時方得繼續使用。

-前項合法通信，指依電信法規定作業之無線電通信。

-低功率射頻電機須忍受合法通信或工業、科學及醫療用電波輻射性電機設備之干擾。

### Administrative Regulations on Low Power Radio Waves Radiated Devices

warning:

#### Article 12

Without permission granted by the NCC, any company, enterprise, or user is not allowed to change frequency, enhance transmitting power or alter original characteristic as well as performance to a approved low power radio-frequency devices.

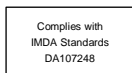
#### Article 14

The low power radio-frequency devices shall not influence aircraft security and interfere legal communications; If found, the user shall cease operating immediately until no interference is achieved.

The said legal communications means radio communications is operated in compliance with the Telecommunications Act.

The low power radio-frequency devices must be susceptible with the interference from legal communications or ISM radio wave radiated

## IMDA



# Specification

Connection type	Bluetooth 2.4GHz
Bluetooth type	V4.1
Bluetooth profile	HSP 1.2, HFP 1.6, A2DP 1.2, AVRCP 1.4
A2DP Codec	SBC, Qualcomm® aptX™ audio, AAC
Cable length	580 mm
Driver Type	Dynamic
Driver size	6 mm
Impedance	32 Ω
Battery life (estimated)	Up to 10 hours
Battery type	Lithium-ion battery, Cylindrical Type, Typical 3.7V/75mAh x2 pcs
Microphone sensitivity	-42 dB
Frequency response	20Hz - 20kHz
Sensitivity	92dB at 1KHz
power consumption	15mA at A2DP mode, speaker output 75dB SPL
Range	Up to 10m
Weight	16 grams



Qualcomm aptX is a product of Qualcomm Technologies International, Ltd. Qualcomm is a trademark of Qualcomm Incorporated, registered in the United States and other countries, used with permission. aptX is a trademark of Qualcomm Technologies International, Ltd., registered in the United States and other countries, used with permission.

Optoma Corporation



[www.optoma.com](http://www.optoma.com)